

# Isolutions

---

RIVERSIDE

---

# Isolutions

INTUITO &  
SPERIMENTAZIONE  
IDENTITÀ &  
SAPERE  
ISPIRAZIONE &  
SAPORE  
ISTANTANEAMENTE  
SOLUZIONE  
ISOLUTIONS  
UN'AMPIEZZA DI  
GAMMA ATTUALE  
E VERSATILE  
PER OGNI TUO  
PROGETTO.

INTUITION &  
EXPERIMENTATION  
IDENTITY &  
KNOWLEDGE  
INSPIRATION &  
FLAVOUR  
INSTANTANEOUS  
SOLUTION  
ISOLUTIONS  
A CONTEMPORARY,  
VERSATILE AND  
EXTENSIVE  
RANGE FOR ALL  
YOUR PROJECTS.

## RIVERSIDE

UN PORTO DELL'ORIENTE,  
UN CROCEVIA DI PERSONE  
E DI NAVI, UN POSTO NEL  
QUALE L'ARIA E L'ACQUA  
FUNGONO DA PROTAGONISTI.  
È DALLA LENTA EROSIONE  
DELLE SUPERFICI CHE NASCE  
IL CONCEPT PROGETTUALE  
DI RIVERSIDE.  
UN PROGETTO DI AMPIO  
RESPIRO.

A GATEWAY TO THE ORIENT.  
A BUSTLING HUB OF PEOPLE  
AND SHIPS. A PLACE WHERE  
WATER AND AIR ARE  
ALL IMPORTANT.  
THE INSPIRATION BEHIND  
THE DESIGN CONCEPT FOR  
RIVERSIDE IS THE SLOW  
EROSION OF SURFACES.  
A COLLECTION WITH  
WIDE-REACHING APPEAL.



RIVERSIDE 156W - RIVERSIDE W - SQUARE 2





RIVERSIDE 156G - RIVERSIDE W - DRIP 1



RIVERSIDE 156G - RIVERSIDE W - RIVERSIDE G - BRUSH W MIX





RIVERSIDEDCA



RIVERSIDE 60A - RIVERSIDE T - PORTLAND A

KITCHEN



PORTLAND 60G



RIVERSIDE 60G



---

---

**LIVING  
IN & OUT**



LIVING





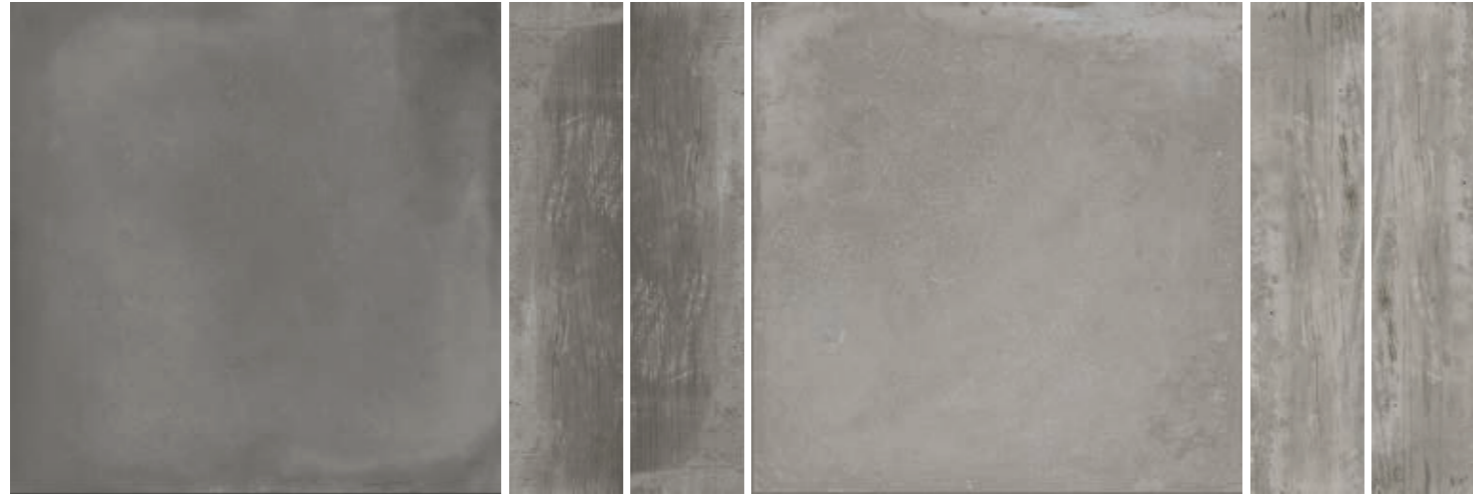
COMMERCIAL



ISO 13006 - G - Bla GL (E≤0,5%) UNI EN 14411 - G

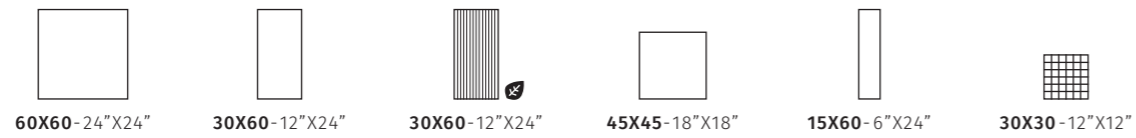
DG

G



W

A



	ST N ○	RIVERSIDE 60DG	RIVERSIDE 36DG	RIVERSIDE R36G	RIVERSIDE 45DG	RIVERSIDE 156DG	MK.RIVER 30DG
	ST N ○	RIVERSIDE 60G	RIVERSIDE 36G	RIVERSIDE R36G	RIVERSIDE 45G	RIVERSIDE 156G	MK.RIVER 30G



PORTLAND 60G  
60x60 - 24"x24"



ISO 13006 - G - Bla GL (E≤0,5%) UNI EN 14411 - G



	ST N ○	RIVERSIDE 60W	RIVERSIDE 36W	RIVERSIDE R36A	RIVERSIDE 45W	RIVERSIDE 156W	MK.RIVER 30W
	ST N ○	RIVERSIDE 60A	RIVERSIDE 36A	RIVERSIDE R36A	RIVERSIDE 45A	RIVERSIDE 156A	MK.RIVER 30A

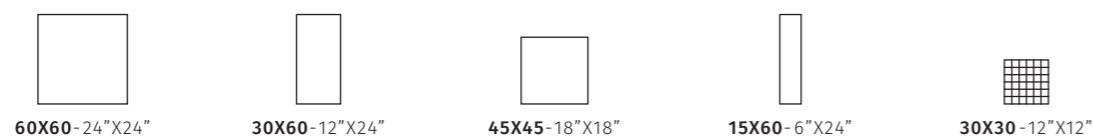


PORTLAND 60A  
60x60 - 24"x24"



ISO 13006 - G - Bla GL (E≤0,5%) UNI EN 14411 - G

T



	ST N ○	RIVERSIDE 60T	RIVERSIDE 36T	RIVERSIDE 45T	RIVERSIDE 156T	MK.RIVER 30T
--	--------	---------------	---------------	---------------	----------------	--------------



ISO 13006 - G - Bla GL (E≤0,5%) UNI EN 14411 - G

PEZZI SPECIALI / SPECIAL PIECES

ST N ○			
	6X60-2.4"X24" △	6X45-2.4"X18" △	30X60-12"X24" △
DG	RIVERSIDEBT60DG	RIVERSIDEBT45DG	RIVERSIDE S60DG
G	RIVERSIDE BT60G	RIVERSIDE BT45G	RIVERSIDE S60G
W	RIVERSIDE BT60W	RIVERSIDE BT45W	RIVERSIDE S60W
A	RIVERSIDE BT60A	RIVERSIDE BT45A	RIVERSIDE S60A
T	RIVERSIDE BT60T	RIVERSIDE BT45T	RIVERSIDE S60T

CARATTERISTICHE TECNICHE SPECIFICHE / TECHNICAL FEATURES SPECIFICATIONS

	DIN 51130 (R)	DIN 51097 (A+B+C)	BCR REP. CEC 6/81		DM 14/6/89 N. 236		PENDULUM TEST BS (INGLESE)	PENDULUM TEST AS/NZS 4856:2004 (AUSTRALIANO)	PENDULUM TEST UNE ENV 12633:2003 (SPAGNOLO)	BOT 3000 (DCOF)
			g.a.	g.b.	c.a.	g.b.				
DG	R10	A	>0,4	>0,4	>0,4	>0,4	>25	-	1	>0,42
G										
W										
A										
T										
R G	R11	A+B	>0,4	>0,4	>0,4	>0,4	>36	>54	3	>0,42
R A										
DG	R10	A	>0,4	>0,4	>0,4	>0,4	>25	-	1	>0,42
G										
W										
A										
T										



ST N O



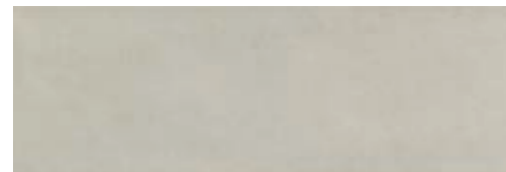
RIVERSIDE A  
20X60 - 8"X24"



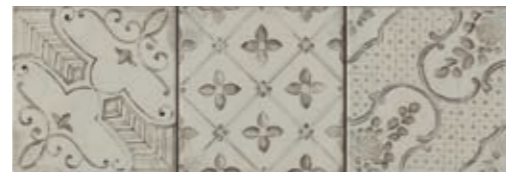
PORTLAND A  
20X60 - 8"X24"



RIVERSIDEDEC A  
20X60 - 8"X24"



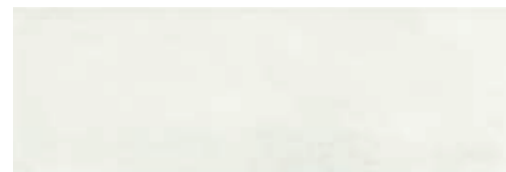
RIVERSIDE G  
20X60 - 8"X24"



PORTLAND G  
20X60 - 8"X24"



RIVERSIDEDEC G  
20X60 - 8"X24"



RIVERSIDE W  
20X60 - 8"X24"



PORTLAND W  
20X60 - 8"X24"



RIVERSIDEDEC W  
20X60 - 8"X24"



RIVERSIDE T  
20X60 - 8"X24"



RIVERSIDE DG  
20X60 - 8"X24"



DRIP 1  
20X60 - 8"X24"



DRIP 2  
20X60 - 8"X24"



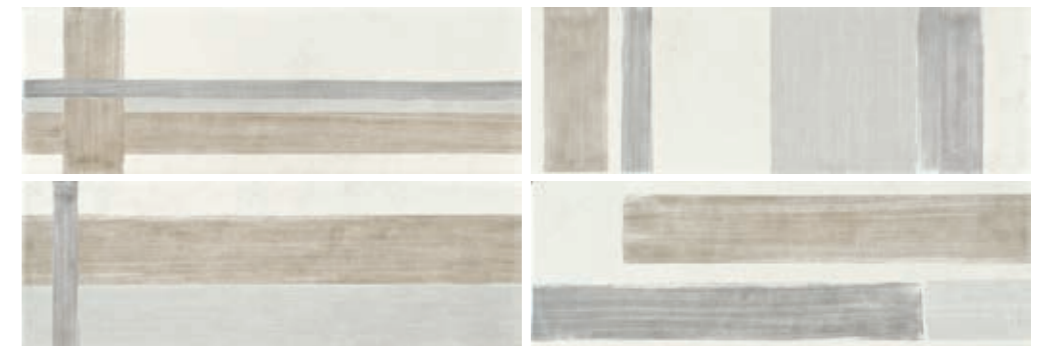
SQUARE 1  
20X60 - 8"X24"



SQUARE 2  
20X60 - 8"X24"



STREET W MIX  
20X60 - 8"X24"



BRUSH W MIX  
20X60 - 8"X24"

## SYMBOLS

INDICAZIONI D'USO  
INDICATIONS FOR USEPavimento  
Floor tilesRivestimento  
Wall tilesDESTINAZIONI D'USO  
SUGGESTED APPLICATIONSAbitazioni  
Domestic purposeEsterni  
Outdoor floorCommerciale leggero  
Tiles for light commercialSUPERFICI  
SURFACESStruttura  
StructureStrutturato  
Slate cutFinitura  
FinishNaturale  
NaturalAspetto superficiale  
Surface lookOpaco  
MattSTONALIZZAZIONE  
SHADE VARIATION

V2

CARATTERISTICHE DI VENDITA  
SALES CHARACTERISTICSProdotto venduto al pezzo.  
Product sold per item.

Tutti i nostri prodotti, sia al mq che al pezzo, sono venduti unicamente a scatola completa.  
All our products are sold only in complete boxes, whether the unit of measure is per item or per square metre.

CARATTERISTICHE TECNICHE  
TECHNICAL SPECIFICATIONSGRES PORCELLANATO / PORCELAIN STONEWARE  
UNI EN 14411(ISO 13006) - BIA (APPENDICE G)

CARATTERISTICA SPECIFICATION	METODO DI PROVA TEST METHODS	REQUISITI PREVISTI DALLA NORMA REQUIREMENTS IN ACCORDANCE TO THE STANDARDS	VALORE MEDIO IMOLA CERAMICA IMOLA CERAMICA AVERAGE VALUE	
 <b>DIMENSIONI E ASPETTO</b> DIMENSIONS AND APPEARANCE	ISO 10545-2	<b>PROSPETTO G1</b> PROSPECT G1	CONFORME COMPLIANT	
 <b>ASSORBIMENTO D'ACQUA</b> WATER ABSORPTION	ISO 10545-3	≤ 0,5%	≤ 0,1%	
 <b>RESISTENZA A FLESSIONE</b> FLEXURAL RESISTANCE		min./MMH 35 N/mm <sup>2</sup>	> 45 N/mm <sup>2</sup>	
 <b>SPORZO DI ROTTURA</b> MODULUS OF RUPTURE	ISO 10545-4	<b>SPESORE</b> - THICKNESS - ≥ 7,5 mm: min. 700 N	8,5 mm*	2500 N*
		<b>SPESORE</b> - THICKNESS - < 7,5 mm: min. 1300 N	12 mm*	5000 N*
			14 mm*	6500 N*
			20 mm**	11000 N**
 <b>RESISTENZA ALL'ABRASIONE PROFONDA</b> DEEP ABRASION RESISTANCE	ISO 10545-6	≤ 175 mm <sup>3</sup>	< 140 mm <sup>3</sup>	
 <b>RESISTENZA ALL'ABRASIONE SUPERFICIALE</b> RESISTANCE TO SURFACE ABRASION	ISO 10545-7	<b>CLASSI 0-5</b> CLASSES 0-5	COME INDICATO IN CATALOGO AS INDICATED IN THE CATALOGUE	
 <b>COEFFICIENTE DILATAZIONE TERMICA LINEARE (α)</b> LINEAR EXPANSION THERMIC COEFFICIENT	ISO 10545-8	<b>METODO DISPONIBILE</b> AVAILABLE ON REQUEST	≤ 7x10 <sup>-6</sup> °C <sup>-1</sup>	
 <b>RESISTENZA AGLI SBALZI TERMICI</b> RESISTANCE TO SUDDEN TEMPERATURE CHANGES	ISO 10545-9	<b>METODO DISPONIBILE</b> AVAILABLE ON REQUEST	RESISTE RESISTANT	
 <b>RESISTENZA AL GELO</b> FROST RESISTANCE	ISO 10545-12	<b>RICHIESTA</b> ALWAYS TESTED	RESISTE RESISTANT	
 <b>PRODOTTI CHIMICI AD USO DOMESTICO ED ADDITIVI PER PISCINA</b> HOUSEHOLD CHEMICALS AND SWIMMING POOL WATER CLEANSERS	ISO 10545-13	<b>UGL</b> min. UB	<b>UGL</b> min. UB	
		<b>GL</b> min. GB	<b>GL</b> min. GB	
		<b>UGL</b> DA ULA, ULB A ULC - FROM ULA, ULB TO ULC	<b>UGL</b> DA ULA, ULB A ULC - FROM ULA, ULB TO ULC	
		<b>GL</b> DA GLA, GLB A GLC - FROM GLA, GLB TO GLC	<b>GL</b> DA GLA, GLB A GLC - FROM GLA, GLB TO GLC	
 <b>ACIDI ED ALCALI A BASSA CONCENTRAZIONE</b> ACIDS AND LOW CONCENTRATION ALKALIS		<b>METODO DISPONIBILE</b> AVAILABLE ON REQUEST	<b>METODO DISPONIBILE</b> AVAILABLE ON REQUEST	
 <b>ACIDI ED ALCALI AD ALTA CONCENTRAZIONE</b> ACIDS AND HIGH CONCENTRATION ALKALIS		<b>METODO DISPONIBILE</b> AVAILABLE ON REQUEST	<b>METODO DISPONIBILE</b> AVAILABLE ON REQUEST	
 <b>RESISTENZA ALLE MACCHIE</b> STAIN RESISTANCE	ISO 10545-14	<b>METODO DISPONIBILE</b> AVAILABLE ON REQUEST	min. 3	
 <b>STABILITÀ DEI COLORI ALLA LUCE</b> COLOUR STABILITY TO LIGHT	DIN 51094	<b>NON DEVONO PRESENTARE APPREZZABILI VARIAZIONI DI COLORE</b> THEY DO NOT HAVE TO SHOW VISIBLE COLOUR ALTERATION	CONFORME COMPLIANT	

\*SPESSORI RIFERITI AL FORMATO 20X20 / THICKNESSES REFERRED TO 20X20 SIZE

\*\*SPESSORI RIFERITI AL FORMATO 60X60 / THICKNESSES REFERRED TO 60X60 SIZE



IMOLACERAMICA.IT

---

A brand of  
**Cooperativa Ceramica d'Imola S.c.**

Via V. Veneto, 13  
40026 Imola (BO) Italia  
Tel. +39 0542 601601  
Fax +39 0542 31749

---